





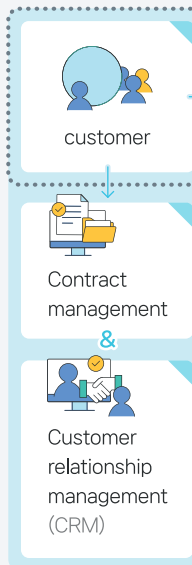
# GCCL Clinical Portal for Integrated Supporting Service

**G-HUB**, developed by GCCL, is a **client portal and management platform** that provides client-optimized services and processes based on 20 years of expertise and skills in sample management. G-HUB ensures professional management of samples, lab kits, and logistics in GCCL, resulting in the reliable analysis results and quality-validated analysis reports to client.

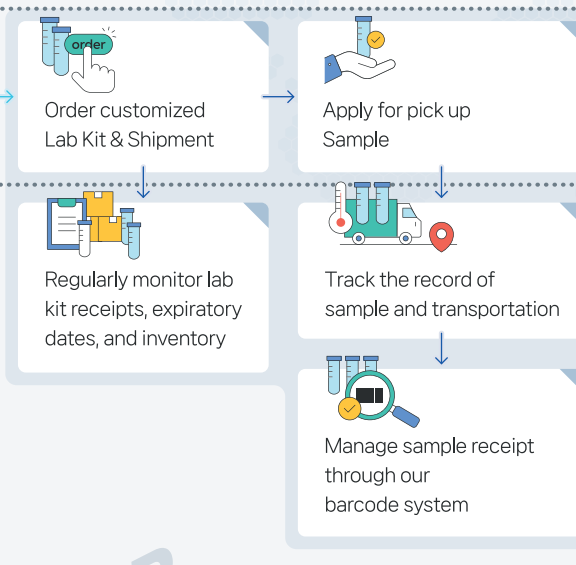
No. of Sample Receipt through G-HUB <b>16,500</b> vials/month 	Sample Logistics Management through G-HUB <b>900</b> cases/month 	Sample Collection Kit Management through G-HUB <b>3,000</b> kits/month 	No. of Analysis Management through G-HUB <b>34,000</b> results/month 
<ul style="list-style-type: none"> <li>◦ Sample reception and management</li> </ul>	<ul style="list-style-type: none"> <li>◦ Registration of logistics for sample pickup and history management</li> </ul>	<ul style="list-style-type: none"> <li>◦ Check the lab kit validation date and stock information</li> </ul>	<ul style="list-style-type: none"> <li>◦ Identify real-time analysis results &amp; download the analysis report</li> </ul>

## > G-HUB Service

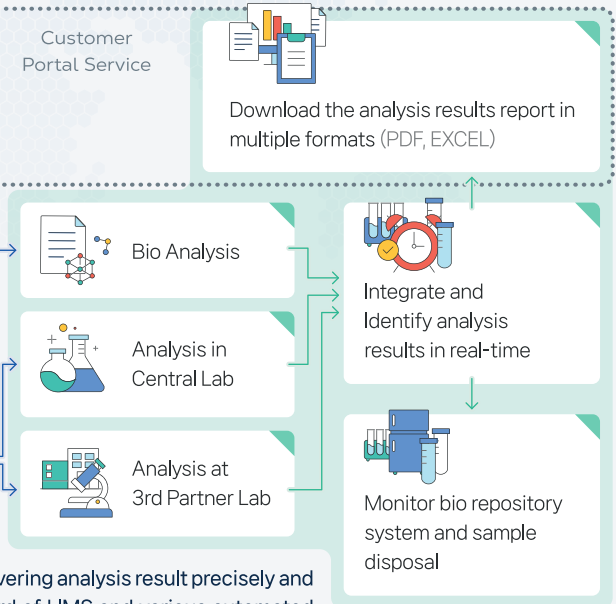
### ◦ Contract Management



### ◦ Project Management



### ◦ Analysis Management



\* First bio analytical lab in Korea delivering analysis result precisely and rapidly by linking the global standard of LIMS and various automated electronic data collection solutions such as Cube CDMS etc.

## > Why G-HUB is Special?

### ◦ Rapid Response

#### | Customized Project Management

Rapid issue resolution is possible due to the systematic management of authorization granted to each project manager

### ◦ User Convenience

#### | Easily accessible web-based system anytime, anywhere

Various global experiences through G-HUB website in English

### ◦ Reliability and Integrity

#### | Data Integrity Assurance

Interlocking ERP Data, various platforms and analysis result data

#### | Regulation Compliance

Rigorous compliance of SOP and FDA 21 CFR Part 11

#### | Central Lab data HUB

Data Interlock between various partner companies (Bio logistics, Laboratory, Clinical IT Solution)

Linkedin



Naver Blog



YouTube



Inquiries

✉ GCCL@gccorp.com

☎ 031-260-9111

🏠 [www.gccl.co.kr](http://www.gccl.co.kr)